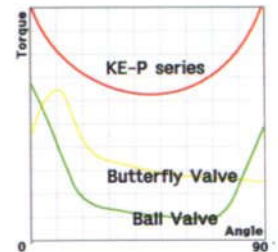


Electric actuator (KE-P series)



- Optimized for a ball/butterfly valves that open and close at an angle of 90°.
- Convenient since it can be mounted directly onto the valves or accessories in accordance with the ISO standards.
- Designed conveniently to allow users to use easily.



Dome type indicator

Since indicator is exposed to the outside, it is easy to check the status of opening and closing of the valve at a distance.

Plastic intermediate cap

There will be no rubbing off even when used for a long period or exposure to sunlight by the use of plastic cap, a non-printing method.

Self locking

Designed to prevent overheating that occurs due to repeated forward & reverse rotation by a wrong signal.

Captive bolt

Bolts shall not be lost even though the cover is opened for wiring.



Low power consumption design

Lesser power consumption by the use of an exclusive special motor.

Terminal Box

Safe and simple wiring is possible by just opening the terminal box without the need of opening & closing whole product.



www.alohan.com
59, Saksigalma-ro 54beon-gil, Yangchon-eup, Gimpo-si, Gyeonggi-do, Korea
sales@alohan.com • Tel:+82-31-989-5345 • Fax:+82-31-989-5346

► PERFORMANCE

| MODEL | MAX TORQUE (Nm) | | | OPERATING TIME 50Hz/ 60Hz(sec) | RATED CURRENT (A) | | | | | DUTYCY- CLE (%) | MOTOR INSULA- TION CLASS | No. OF HANDLE TURNS |
|----------|-----------------|-----|-----|--------------------------------------|-------------------|------|------------|------|-----|--------------------|-----------------------------|------------------------|
| | 0° | 45° | 90° | | AC(1PHASE) | | AC(3PHASE) | | DC | | | |
| | | | | | 110V | 220V | 380V | 440V | 24V | | | |
| KE010-3P | 100 | 65 | 100 | 22/18 | 0.5 | 0.3 | N/A | N/A | 3 | S2 40% | *F | 15 |
| KE010-4P | 80 | 50 | 80 | 18/14 | 0.5 | 0.3 | N/A | N/A | 3 | S2 40% | *F | 11 |
| KE010-5P | 60 | 40 | 60 | 14/11 | 0.5 | 0.3 | N/A | N/A | 3 | S2 40% | *F | 9 |
| KE016-3P | 160 | 107 | 160 | 28/23 | 1.05 | 0.55 | N/A | N/A | 5 | S2 40% | *F | 19 |
| KE016-4P | 130 | 85 | 130 | 22/18 | 1.05 | 0.55 | N/A | N/A | 5 | S2 40% | *F | 16 |
| KE016-5P | 100 | 65 | 100 | 18/14 | 1.05 | 0.55 | N/A | N/A | 5 | S2 40% | *F | 13 |
| KE028-3P | 280 | 190 | 280 | 40/33 | 1.05 | 0.55 | N/A | N/A | 5 | S2 40% | *F | 23 |
| KE028-4P | 240 | 160 | 240 | 30/25 | 1.05 | 0.55 | N/A | N/A | 5 | S2 40% | *F | 19 |
| KE028-5P | 190 | 125 | 190 | 24/20 | 1.05 | 0.55 | N/A | N/A | 5 | S2 40% | *F | 15 |
| KE040-3P | 400 | 270 | 400 | 40/33 | 1.5 | 0.7 | 0.15 | 0.16 | 7 | S2 40% | *F | 23 |
| KE040-4P | 350 | 240 | 350 | 30/25 | 1.5 | 0.7 | 0.15 | 0.16 | 7 | S2 40% | *F | 19 |
| KE040-5P | 300 | 220 | 300 | 24/20 | 1.5 | 0.7 | 0.15 | 0.16 | 7 | S2 40% | *F | 15 |
| KE050-3P | 500 | 350 | 500 | 40/33 | 2 | 1 | 0.28 | 0.30 | N/A | S2 40% | F | 23 |
| KE050-4P | 450 | 310 | 450 | 30/25 | 2 | 1 | 0.28 | 0.30 | N/A | S2 40% | F | 19 |
| KE050-5P | 400 | 280 | 400 | 24/20 | 2 | 1 | 0.28 | 0.30 | N/A | S2 40% | F | 15 |

*Motor insulation class of 24V DC is B.

► SELECTION GUIDE

| VALVE SIZE | | BALL VALVE (2WAY/10K/#150) | BUTTERFLY VALVE (10K/#150) |
|------------|------|----------------------------|----------------------------|
| 1/2" | 15A | KE002 | |
| 3/4" | 20A | KE004 | |
| 1" | 25A | KE005 | |
| 1-1/4" | 32A | KE006 | |
| 1-1/2" | 40A | KE008 | KE004 |
| 2" | 50A | KE010 | KE005 |
| 2-1/2" | 65A | KE016 | KE006 |
| 3" | 80A | KE028 | KE008 |
| 4" | 100A | KE040 | KE010 |
| 5" | 125A | KE050 | KE016 |
| 6" | 150A | | KE028 |
| 8" | 200A | | KE040 |
| 10" | 250A | | KE050 |
| 12" | 300A | | |

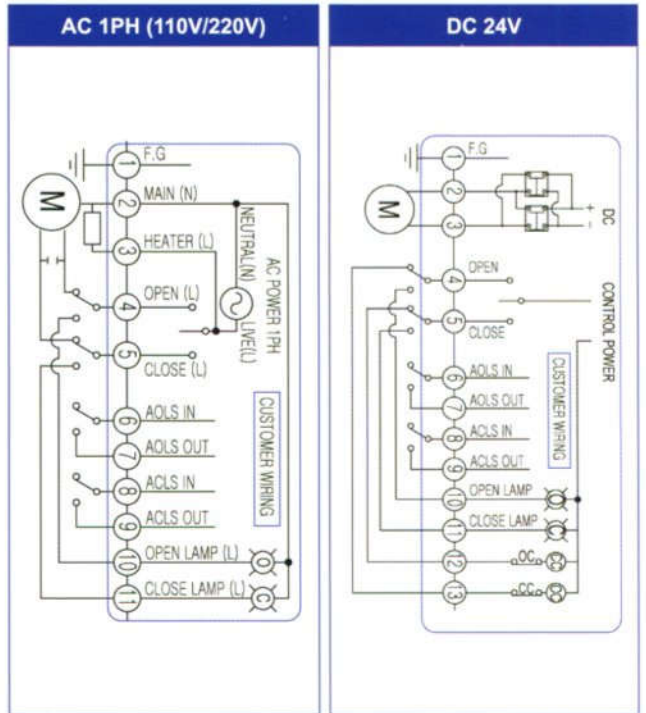
The above data is for reference only;

the actual assembly may be different depending on valve material, pressure, structure, fluid and operational environment.

▶ STANDARD SPECIFICATION

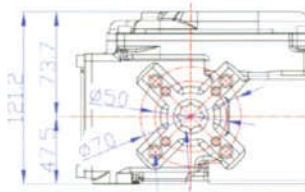
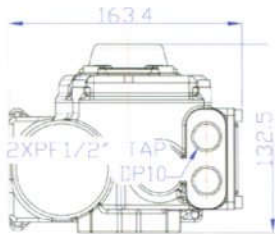
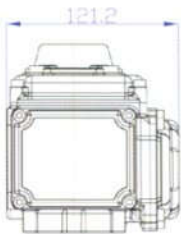
| | |
|---------------------|--|
| ENCLOSURE | WEATHER PROOF IP67 |
| MAIN POWER | 110V, 220V AC 50Hz/60Hz, 24V DC |
| DUTY CYCLE | S2 40%, MAX.30minutes |
| INDICATOR | DOME TYPE MECHANICAL INDICATOR |
| LIMIT SWITCHES | 2EACH FOR OPEN & CLOSE (SPDT 250VAC/16A) |
| MANUAL OPERATION | KE010~KE016 ; BY WRENCH 6mm(HEX.) KE028~KE050 ; BY WRENCH 8mm(HEX.) |
| TRAVEL ANGLE | 90°±5° |
| CABLE ENTRIES | 2-PF1/2" |
| AMBIENT TEMPERATURE | -20°c~+60°c |
| EXTERNAL COATING | POWDER COATING |
| INSIDE HEATER | 1PH 220V/110 5W |

▶ WIRING (KE010~KE050)



▶ DIMENSION

KE010

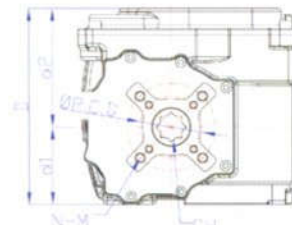
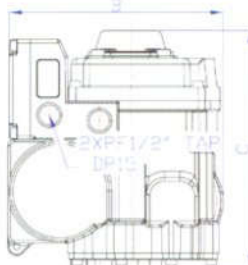
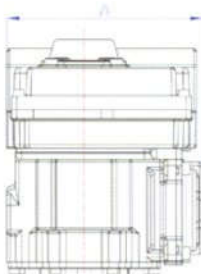


ISO 5211
F05/M6 TAP DP12
F07/M8 TAP DP12
14 STAR DP12
(#1P 1/1)

Wt(Kg)

3.0

KE016~050



#Option

| MODEL | A | B | C | D | d1 | d2 | ISO | P.C.D | N-M | CH | DTH | Wt(Kg) |
|-------|-------|-------|-------|-------|------|-------|--------------|-------------|---------------|----|-----|--------|
| KE016 | 157.0 | 170.5 | 189.8 | 157 | 62 | 95 | F05/F07/#F10 | 50/70/#102 | 4-M6/M8/M10 | 17 | 19 | 6.2 |
| KE028 | 181.9 | 208.9 | 209.0 | 181.9 | 73.7 | 108.2 | F07/F10/#F12 | 70/102/#125 | 4-M8/M10/#M12 | 22 | 19 | 8.9 |
| KE040 | | | | | | | | | | | | 9.4 |
| KE050 | | | | | | | | | | | | 9.4 |

Electric actuator (KE-G series)



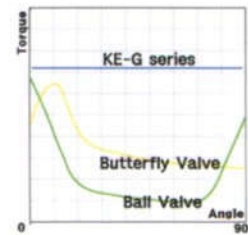
Plastic intermediate cap

There will be no rubbing off even when used for a long period or exposure to sunlight by the use of plastic cap, a non-printing method.



Terminal Box

Safe and simple wiring is possible by just opening the terminal box without the need of opening & closing whole product.



| SIZE | BALL VALVE (2WAY/10K/#150) | BUTTERFLY VALVE (10K/#150) |
|--------|----------------------------|----------------------------|
| 1/2" | 15A | KE002 |
| 3/4" | 20A | KE004 |
| 1" | 25A | |
| 1-1/4" | 32A | KE005 |
| 1-1/2" | 40A | KE006 |
| 2" | 50A | KE008 |
| 2-1/2" | 65A | KE004 |
| 3" | 80A | KE005 |
| 4" | 100A | KE006 |
| | | KE008 |

► PERFORMANCE

► KE002/KE004/KE006/KE008 (Single-voltage Type)

| MODEL | MAX TORQUE(Nm) | OPERATING TIME 50Hz/60Hz(sec) | RATED CURRENT(A) | | | DUTYCYCLE(%) | No. OF HANDLE TURNS |
|----------|----------------|-------------------------------|------------------|------|-----|--------------|---------------------|
| | | | AC(1PH) | | DC | | |
| | | | 110V | 220V | 24V | | |
| KE002-6G | 20 | 17.5/14.5 | 0.2 | 0.1 | 2.5 | S2 40% | 3 |
| KE002-5G | 10 | 7/6 | 0.2 | 0.1 | 2.5 | S2 40% | 3 |
| KE004-5G | 40 | 17.5/14.5 | 0.38 | 0.2 | 3 | S2 40% | 3 |
| KE004-4G | 15 | 6/5 | 0.38 | 0.2 | 3 | S2 40% | 3 |
| KE006-6G | 60 | 18/15 | 0.5 | 0.3 | 3 | S2 40% | 3 |
| KE006-5G | 25 | 8/6.5 | 0.5 | 0.3 | 3 | S2 40% | 3 |
| KE008-6G | 80 | 17/14 | 0.5 | 0.3 | 3 | S2 40% | 20 |
| KE008-5G | 40 | 8/6 | 0.5 | 0.3 | 3 | S2 40% | 20 |

*KE006's data can be changed.

► KE005 (Multi-voltage type)

| MODEL | MAX TORQUE (Nm) | OPERATING TIME 50Hz/60Hz(sec) | RATED CURRENT (A) | | | DUTYCYCLE(%) | No. OF HANDLE TURNS |
|----------|-----------------|-------------------------------|-------------------|---------------|---------|--------------|---------------------|
| | | | 100V~250V AC | 24V AC/24V DC | 24V DC* | | |
| KE005-8G | 50 | 13 | 0.5~0.2 | 3.5A | 3.5A | S2 40% | 18 |
| KE005-7G | 20 | 6 | 0.5~0.2 | 3.5A | 3.5A | S2 40% | 18 |

*24V DC is Control Board embedded.

► STANDARD SPECIFICATION

► KE002/KE004/KE006/KE008

#Option

| | |
|--------------------------|---|
| ENCLOSURE | WEATHER PROOF IP67 |
| MAIN POWER | 110V, 220V AC 1PH 50Hz/60Hz, 24V DC |
| DUTY CYCLE | S2 40%, MAX 30minutes |
| INDICATOR | DOME TYPE MECHANICAL INDICATOR |
| LIMIT SWITCHES | 2EACH FOR OPEN & CLOSE (SPDT 250VAC/5A) |
| MANUAL OPERATION | (KE002~006) BY SPANNER 5mm (KE008) BY WRENCH 5mm (HEX.) |
| TRAVEL ANGLE | 90°±5 |
| CABLE ENTRIES | (KE002~006) 1-PF1/2" (KE008) 2-PF1/2" |
| AMBIENT TEMPERATURE | -20℃~+60℃ |
| EXTERNAL COATING | POWDER COATING |
| INSIDE HEATER | (KE002~006) N/A (KE008) 1PH 220V/110V AC |
| ISO5211, CH STEM, WEIGHT | (KE002) F03/F05, CH 11*11 DP15 (KE004) F03/F05, CH 11*11 DP15, 1.5Kg (KE006) F03/F05/F07, CH 14*14 DP19 (KE008) F03/F05/F07, CH 14*14 DP15/ #CH 17*17 DP19, 2.6Kg |
| CABLE ENTRY | (KE002) CABLE WIRE TYPE (KE004/KE006/KE008) TERMINAL BOX TYPE |

► KE005

#Option

| | |
|--------------------------|---|
| ENCLOSURE | WEATHER PROOF IP67 |
| MAIN POWER | 110V, 220V, AC 1PH, 50Hz/60Hz, 24V DC |
| DUTY CYCLE | S2 40%, MAX 30minutes |
| INDICATOR | DOME TYPE MECHANICAL INDICATOR |
| LIMIT SWITCHES | 2EACH FOR OPEN & CLOSE (SPDT 250VAC/5A) |
| MANUAL OPERATION | BY WRENCH 5mm (HEX.) |
| TRAVEL ANGLE | 90°±5 |
| CABLE ENTRIES | 2-PF1/2" |
| AMBIENT TEMPERATURE | -20℃~+60℃ |
| EXTERNAL COATING | POWDER COATING |
| INSIDE HEATER | HEATING ELEMENT ON PCB |
| ISO5211, CH STEM, WEIGHT | F03/F05/#F07, CH 11*11 DP15/#CH 14*14 DP17, 1.3Kg |
| CABLE ENTRY | TERMINAL BOX TYPE |